

PowerLite™ Pinner HN120

MAX PowerLite 400 psi system

MAX developed the world's first high-pressure pneumatic nailing system and introduced it to the Japanese market in 1994. For the past decade the MAX PowerLite 400 psi system has revolutionized the construction industry in Japan. Powered by the 400 psi technology, the MAX PowerLite tools are approximately 40% lighter and 20% smaller than most competitors tools without sacrificing power. Now, the MAX PowerLite system is available in the U.S. market. Experience the Next Generation in technology with MAX.

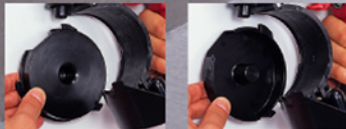
FEATURES

Extremely powerful



Enough power to drive .300" head drive pins into concrete

Wide range of fastener length with adjustable magazine plate



1" to 1-1/4"

1-1/2" to 2-1/2"

Only **6.4 lbs**

Comes with plastic carry case

• Trigger Lock for safety

• 50 pin magazine capacity



• Unique tangle free swivel fitting



TOOL SPECIFICATIONS

MODEL	HN120
WEIGHT	6.4lbs
DIMENSIONS	15 3/4"(H) x 3 3/8"(W) x 12 3/8" (L)
LOAD CAPACITY	50 pins
OPERATING PRESSURE	210 to 320psi

APPLICATIONS

Applications	Recommended Pins	Attachment used	
Drywall track to Concrete 	Drywall track	Attachment A Attachment C	
	Recommended Pins length		Attachment A Attachment C
Wood to Concrete 	Thickness of Wood	Attachment B	
	1/2"		CP-C832W7-ICC 1-1/4"
	3/4"		CP-C832W7-ICC 1-1/4"
			CP-C838W7-ICC 1-1/2"
	1"		CP-C838W7-ICC 1-1/2"
Wood to Steel 	Thickness of Wood	Attachment B	
	1/2"		CP-C832W7-ICC 1-1/4"
	3/4"		CP-C832W7-ICC 1-1/4"
			CP-C838W7-ICC 1-1/2"
	1"		CP-C838W7-ICC 1-1/2"
Thickness of steels 1/8" to 3/16" (not hardened steel) 	1"	CP-C850W7-ICC 2"	
	1-1/2"	CP-C850W7-ICC 2"	
	1-1/2"	CP-C865W7-ICC 2-1/2"	
All applications above with Washer 	Same as above. Longer nail in same category is recommended.	Washer Attachment	



PowerLite™ Compressor AKHL1050E

For the PowerLite Pinner HN120 operation, the PowerLite Compressor and PowerLite Hose are required.

PowerLite Sub tank AKTH5

• Regular 80-120 psi tools

2 pcs.

PowerLite Hose KH100FT (100 feet)

PowerLite Compressor AKHL1050E 115 V direct drive

Lightweight 51.7 lbs Compact

• High pressure PowerLite tools

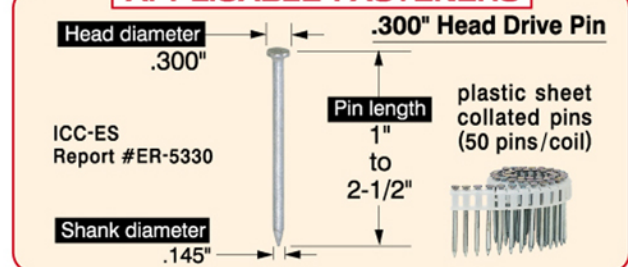
2 pcs.

Special fitting only for PowerLite Hose

COMPRESSOR SPECIFICATIONS

MODEL	AKHL1050E
DIMENSIONS	11-1/4"(H) x 13-3/4"(W) x 23-1/2"(L)
WEIGHT	51.7 lbs.
POWER SUPPLY	115 V / 60 Hz
RATED CURRENT	15 A
PUMP	Oil-less direct drive
MOTOR POWER	2 HP
TANK	2.6 Gal
RPM	2,350 rpm
AIR DISPLACEMENT	3.5 CFM @ 100 psi / 2.8 CFM @ 300 psi

APPLICABLE FASTENERS



The specifications and design of the products in this catalog will be subject to change without advance notice due to our continuous efforts to improve the quality of our products.



MAX USA CORP.

257 East 2nd Street Mineola, New York 11501
 Phone: 1-800-223-4293 Fax: 1-516-741-3272
 www.maxusacorp.com

Dealer: