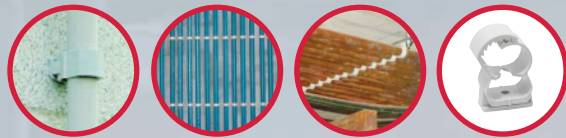


### AAT - Ceiling Hanger

Allows the easy installation of different types of wire or cable thanks to its spear shape. Fast installation with gas nailers for concrete. Exclusive patented HDPE clip. Allows firm stick fit and holding on the nailer's nose piece.



### ABT - Nylon Pipe Clamp (Abranyl)

The design for multiple closing and the adaptable lower side allows fixing up to 3 main sizes and all the possible intermediates. Fast installation. This clamp can be tightly closed by pressing the pipe. Several clamps can be fixed at once without tools.



### AN - Classic Pipe Clamp (Abranyl)

Multidiameter, the design for multiple closing and the adaptable lower side allows fixing up to 2 main sizes and all the possible intermediates. This clamp can be tightly closed by pressing the pipe. Several clamps can be fixed at once without tools.

### AW - Metal Washer

Fast installation in two steps with gas nailers for concrete. Patented stick fit design. Allows firm holding on the nailer's nose piece. Hallogen free. Multiple applications. Allows firm fixing of profiles, plastic channel, metal sheets.



### FPS - Single Conduit Clip

Plastic clip for pipe fixing. Fast installation in two steps with gas nailers for concrete. It has three reinforcement ribs but no hole.



### FPD - Double Conduit Clip

Plastic clip for parallel pipe fixing. Fast installation in two steps with gas nailers for concrete. It has a reinforcement rib but no hole. Alignment mark. It has two alignment marks in base for align the shots.

### FT - Metal Conduit Clip

Metal clip for pipe fixing. Fast installation in two steps with gas nailer for concrete. Only shoot and install the cables. It has two reinforcement ribs but no hole. Shoots into Concrete, Concrete Block, Solid Brick & Steel.



### TDS (BaseBrid) - Cable Tie Fasteners

Base for fixings with cable tie (width up to 10mm). Allows the installation of any kind of pipes, tubes or cables with cable ties of 10 mm of maximum width with a top side curved shape.. Patented stick fit design allows firm holding on the nailer's nose piece.

### WSC / WDC - Single / Double Wire Conduit Clip

Allowable installation using nylon plug and screw. Recommended nylon plug FX6 and screw TG32. Fast installation in two steps with gas nailer for concrete. Only shoot and install the cables.



The GS738C drives a wide range of plastic collated concrete pins from 15mm x 2.6mm up to 38mm x 2.6mm.

With the capacity to nail any of these Apolo clips, Melbourne Nails, Max & Apolo are making it easier for you to get the job done quickly and easily.



Apolo are proud to have KIWA certificates and approvals for their fixings.

Please contact your local dealer or Melbourne Nails Aust. for further information.